



C66

Mobile Computer



Android



4G



WiFi



Bluetooth



1D Barcode



2D Barcode



NFC



UHF



Camera



GPS

Chainway C66 is a newly-developed rugged handheld computer with large screen and strong extensibility. Based on Android 9.0 OS, it is equipped with Qualcomm octa-core processor for high-speed processing. With 5.5-inch high-definition display, it is integrated with barcode scanning, NFC and other functions. The data collection device supports quick charge and UHF sled for good extensibility that can meet the needs in logistics, warehouse, manufacturing, retail, asset tracking, power patrol inspection, etc.



UHF



UHF Sled Reader



Pistol Grip

Specification

Physical Characteristics	
Dimensions	160.0 x 76.0 x 15.5 mm / 6.3 x 2.99 x 0.61 in.
Weight	287 g / 10.12 oz. (device with battery)
Keypad	1 power key, 2 scan keys, 2 volume keys, 1 PTT key
Battery	4300 mAh removable main battery, 5200 mAh optional pistol battery, support QC3.0 and RTC
	Standby: over 300 hours (only main battery)
	Continuous use: over 12 hours (depending on user environment)
	Charging time: 2.5 hours (charge device by standard adaptor and USB cable)
Speaker	Support
Vibrator	Support
Microphone	2 Microphones, 1 for noise reduction
Display	5.5-inch high definition full display (18:9), IPS LTPS 1440*720
Touch Panel	Corning Gorilla Glass, multi-touch panel, gloves and wet hands supported
Sensor	Gravity sensor, proximity sensor, light sensor, accelerometer sensor, vibration motor
Indicator LED	Power, charging, status indicator
Card slot	2 slots for SIM card, 1 slot for TF card
Interfaces	USB3.0, Type-C, OTG, extended thimble
Performance	
CPU	Qualcomm 1.8 GHz Octa-core
RAM+ROM	2GB+16GB / 3GB+32GB
Expansion	Supports up to 128 GB Micro SD card
Developing Environment	
Operating System	Android 9.0: GMS, Android Enterprise, Zero-Touch, FOTA, Soti MobiControl, SafeUEM supported
SDK	Chainway Software Development Kit
Language	Java
Tool	Eclipse / Android Studio
User Environment	
Operating Temp.	-20 °C~+50 °C
Storage Temp.	-40 °C~+70 °C
Humidity	5% RH - 95% RH non condensing
Drop Specification	Multiple 1.5 m / 4.92 ft. drops (at least 20 times) to the concrete across the operating temperature range
	Multiple 2.4 m / 7.87 ft. drops (at least 20 times) to the concrete after installed rubber bumper
Tumble Specification	1000 x 0.5 m/1.64 ft falls at room temperature
Sealing	IP65 per IEC sealing specifications
ESD	±15 KV air discharge, ±8 KV conductive discharge
Communication	
WLAN	Support 802.11 a/b/g/n/ac
WWAN (Europe, Asia)	2G: 850/900/1800/1900 MHz
	3G: CDMA EVDO: BC0
	WCDMA: 850/900/1900/2100MHz
	TD-SCDMA: A/F(B34/B39)
	4G: B1/B3/B5/B7/B8/B20/B38/B39/B40/B41

WWAN(America)	2G: 850/900/1800/1900MHz
	3G: 850/900/1900/2100MHz
	4G: B2/B4/B5/B7/B12/B17/B38
Bluetooth	Bluetooth 4.2/4.1+HS/4.0/3.0+HS/2.1+EDR
GNSS	GPS/AGPS, GLONASS, BeiDou, internal antenna
Data Collection	
Camera	
Rear Camera	Rear 13MP Autofocus with flash
NFC	
Frequency	13.56 MHz
Protocol	ISO14443A/B, ISO15693, NFC-IP1, NFC-IP2, etc.
Chips	M1 card (S50, S70), CPU card, NFC tags, etc.
Range	2-4 cm
UHF1 (Optional)	
Engine	CM2000-1 module based on Impinj Indy R2000
Frequency	865-868 MHz / 920-925 MHz / 902-928 MHz
Protocol	EPC C1 GEN2 / ISO18000-6C
Antenna	Circular Polarized Antenna (4 dBi)
Power	1W (30 dBm, +5 dBm to +30 dBm adjustable)
	2W Optional (33 dBm, for Lati America, etc.)
R/W range	>25 m (indoors); >15 m (open outdoors, Impinj MR6 tag)
Reading rate	>200 tags/s
Communication Mode	Pin Connector
UHF2 (Optional, UHF Sled)	
Engine	CM2000-1 module based on Impinj Indy R2000
Frequency	865-868 MHz / 920-925 MHz / 902-928 MHz
Protocol	EPC C1 GEN2 / ISO18000-6C
Antenna	Circular Polarized Antenna (3 dBi)
Power	1W (30 dBm, support +5~+30 dBm adjustable)
	2W Optional (33 dBm, for Lati America, etc.)
R/W range	>22 m (indoors); >10 m (open outdoors, Impinj MR6 tag)
Reading rate	>200 tags/s
Communication Mode	Pin Connector / Bluetooth
*Ranges and rates depend on tags and environment	
Barcode Scanning (optional)	
2D Scanner	Zebra: SE4710/SE2100; Honeywell: N6603
1D Symbolgies	UPC/EAN, Code128, Code39, Code93, Code11, Interleaved 2 of 5, Discrete 2 of 5, Chinese 2 of 5, Codabar, MSI, RSS, etc.
2D Symbolgies	PDF417, MicroPDF417, Composite, RSS, TLC-39, Datamatrix, QR code, Micro QR code, Aztec, MaxiCode; Postal Codes: US PostNet, US Planet, UK Postal, Australian Postal, Japan Postal, Dutch Postal (KIX),etc.
Optional accessories(See details in Accessory Guide)	
Separate handle with one button;	
Handle + battery (handle battery 5200 mAh, one button) ;	
UHF back clip + handle (5200 mAh, one button) ;	
Wrist Strap; Rubber Bumper; Charging Cradle	

Notice: Product specifications are subject to change without prior notice. / Model: C66 / Update Date: 2019-11-06

CHAINWAY®

Shenzhen Chainway Information Technology Co., Ltd

Address: 9F, Building2, Phase 2, Gaoxinqi Industrial Park, Liuxian 1st Rd., Bao'an District, Shenzhen, Guangdong 518102, China

Tel: 0086-755-23223316

Fax: 0086-755-23223310

Email: sales@chainway.cn

Web: http://www.chainway.net

C66

Handheld Computer

Accessories



STD. Spec.

Adapter



PWR-C66-5V2A-CN



PWR-C66-5V2A-EU



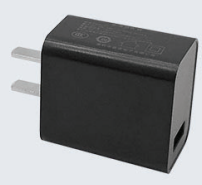
PWR-C66-5V2A-UK



PWR-C66-5V2A-US

Adapter(CN/EU/UK/US), I/P: 100-240V, O/P: 5V2A, use with DC-BK-TypeC cable

QC Adapter



PWR-18W-CN



PWR-18W-EU



PWR-18W-UK



PWR-18W-US

Quick Charge adapter(CN/EU/UK/US), I/P: 100-240V, O/P: 5V3A/12V1.5A/9V2A, use with DC-BK-TypeC cable

Comment: standard adaptor and QC adaptor are alternative.

USB cable



DC-BK-TypeC
1.0 meter Type-C cable

Battery



BTRY-C66-43MA
4300mAh Li-Ion battery, 3.8V output

Optional

Rugged Rubber Boot

**RB-C66-RR/RB-C66-RRP**

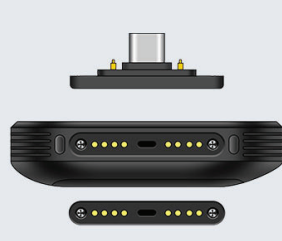
Rugged Rubber Boot only, omni-directional protected. RB-C66-RR does not support charging cradle. RB-C66-RRP is pre installed with Type C & Pogo Pin I/O connector, then it supports CRD-C66-RBC/CRD-C66-RBCE charging cradle.

**RB-C66-RRH/RB-C66-RRHP**

Rugged Rubber Boot with hand strap, omni-directional protected. RB-C66-RRH does not support charging cradle. RB-C66-RRHP is pre installed with Type C & Pogo Pin I/O connector, then it supports CRD-C66-RBC/CRD-C66-RBCE charging cradle.

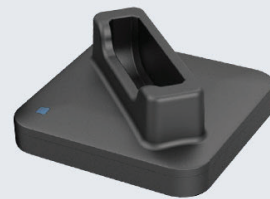
**RB-C66-RRC/RB-C66-RRCP**

Rugged Rubber Boot with belt clip, omni-directional protected. RB-C66-RRC does not support charging cradle. RB-C66-RRCP is pre installed with Type C & Pogo Pin I/O connector, then it supports CRD-C66-RBC/CRD-C66-RBCE charging cradle.

**RB-C66-P**

Type C & Pogo Pin I/O Connector, to be mounted with the rugged rubber boot, enable it to support charging cradle (CRD-C66-RBC/RBCE). The wired network is available when the rugged rubber boot is placed on the cradle (CRD-C66-RBCE).

Charging Cradles & Adapters

**CRD-C66-SCC**

Charging Cradle for device only, use with DCPWR-12V2A-XX adapter.

**CRD-C66-MBC**

Charging Cradle for main battery, up to 4 slots, use with DCPWR-12V2A-XX adapter.

**CRD-C66-PBC**

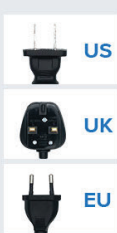
Charging Cradle for pistol battery, up to 2 slots, use with DCPWR-12V2A-XX adapter.

**CRD-C66-INS****CRD-C66-RBC****CRD-C66-RBCE****CN****UK****EU****US****CRD-C66-RBC/CRD-C66-RBCE**

Charging Cradle for device, use with DCPWR-12V2A-XX adapter. CRD-C66-RBCE is an advanced CRD-C66-RBC, w/sync, w/ethernet, w/DC. The cradle cup has an insert that must be removed prior to inserting the C66 with Rugged Boot.

DCPWR-12V2A-XX

Adapter(CN/EU/UK/US), I/P: 100-240V, O/P: 12V2A, DC

**CRD-MCB**

The base of 4-slots charging cradle set for 4 pieces of cradle, use with DCPWR-12V5A-XX adapter.

For load balance, recommendation:

1. 4x cradle for device
2. 3x cradle for device + 1x cradle for main battery
3. 2x cradle for device + 1x cradle for main battery + 1x cradle for pistol battery

Vehicle Cradle

**CRD-C66-VC**

Vehicle Charger Cradle, with type-C, use with DC-BK-TypeC cable. Car holder and car adapter need to be purchased separately

Rubber Bumper

**RB-C66-PR**

Protective rubber bumper, upper and lower
4 pcs M1.6 screws are necessary.

Hand Strap

**RB-C66-HS**

Hand strap with buckle
2 pcs M1.6 screws are necessary.

Screen Protector

**SP-C66**

Tempered glass screen protector

Pistol grip

**RB-C66-PS**

Snap-On Trigger Handle and Rugged Boot Kit, use with optional pistol battery

4 pcs M1.6 screws are necessary.

**BTY-C66-PB**

Pistol battery, 5,200 mAh

