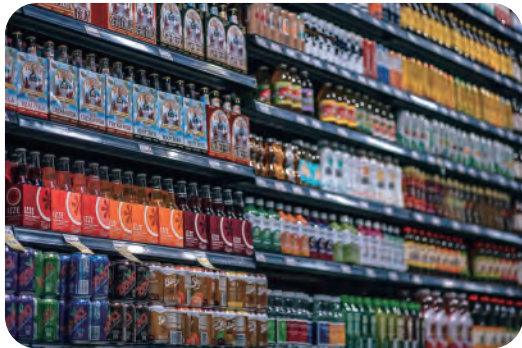


MINDEO



1D

2D



MD6600

Handheld Image Scanner

Features

- 1 High performance in decoding barcode
- 2 Stylish and ergonomic design
- 3 Plug-and-play interfaces enable the scanner to be used with different host devices
- 4 Image auto-induction technology supports free switch between handheld and auto-detection modes
- 5 Soft white auxiliary lighting and green aimer deliver comfortable and convenient scanning experience



PHYSICAL CHARACTERISTICS

Dimensions	90 mm × 62.8 mm × 153 mm
Weight	132 g (without cable)
Cable	Straight 2.0 m
Connector Type	RJ-45 phone jack connector
Case Material	PC+TPU
Exit Window Material	Tempered glass
Host System Interfaces	RS-232, or USB Keyboard, USB virtual COM
Indicator Interface	Beeper and LED
Trigger Mode	Hand-held, Auto-Detect
Programming Method	Scanning special barcodes in sequence
Firmware Upgrade	Online

ELECTRICAL CHARACTERISTICS

Input Voltage	5.0 ± 0.25 VDC
Current	Standby: 160 mA, Working: 300 mA (Max: 480 mA)

PERFORMANCE CHARACTERISTICS

CPU	32-bit ARM Microprocessor
Scan Pattern	Image
Image Size	1280 × 800 pixels
Light Source	Illumination : 5000 K , white LED Aiming: 525 nm peak wavelength, green LED
Field of View	Horizontal: 41°, Vertical: 28°
Scanning Angles	±70°, ±75°, 360°(skew, pitch, roll)
Print Contrast	20% minimum reflectance difference
Decoding Capability	All common 1D/2D paper barcodes and mobile barcodes
Minimum Resolution	HD : 1D Code 39: 3 mil SR : 1D Code 39: 4 mil

	High Density Series	Standard Range Series
Decoding Depth	3 mil Code39 (3 chars)	/
	4 mil Code39 (9 chars)	30 – 90 mm
	13 mil UPC (6 chars)	0 – 250 mm
	20 mil Code39 (1 char)	15 – 340 mm
	6.7 mil PDF417 (20 chars)	10 – 100 mm
	10 mil QR (20 chars)	0 – 155 mm
	20 mil QR (20 chars)	0 – 270 mm

ENVIRONMENTAL CHARACTERISTICS

Temperature	Operating: -10°C to 50°C (14°F to 122°F); Storage: -20°C to 70°C (-4°F to 158°F)
Humidity	5% to 95% (non-condensing)

Safety	EMC: EN55032, EN55024 Photobiological Safety: EN62471 RF Immunity: IEC61000-4-3, 10 V/m Artificial light Immunity: 100,000 lux Sealing: IP52 Drop Resistance: Withstands multiple 2.0 m drops to concrete
--------	--

[Notice]: Specifications are subject to change without notice.

